

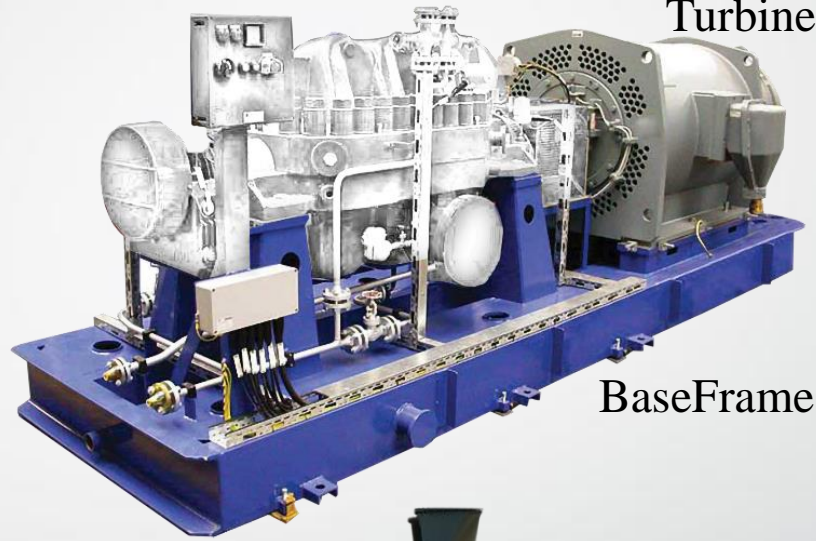


TM TECHNOLOGY



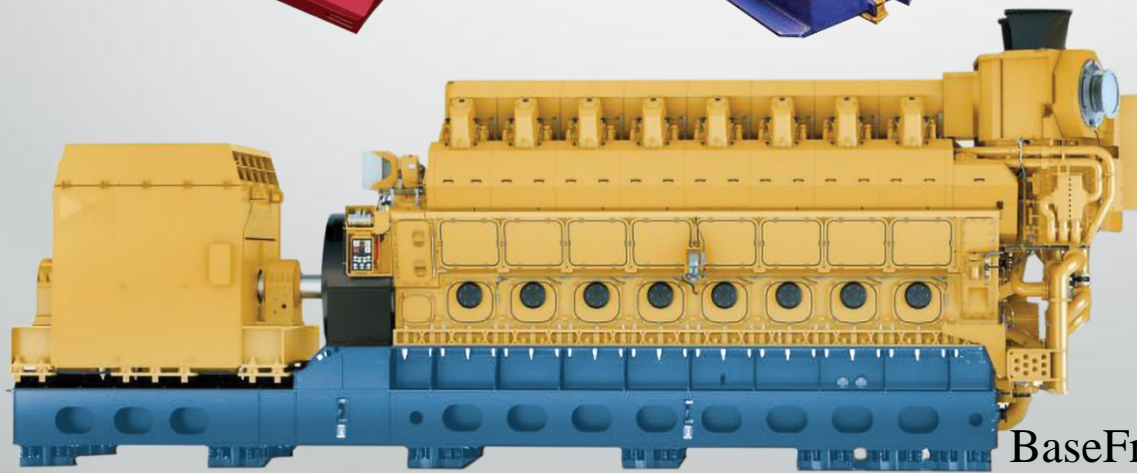
Stabilizer Fin Box

Fin



Turbine Case

BaseFrame



BaseFrame



TM-Technology JSC, located in Ruse, Bulgaria, specialises in large-scale welded constructions across key sectors, including **shipbuilding**, **oil & gas**, **sustainable energy**, and **heavy machinery**.

The factory is designed and equipped for wide range of operations including thermal cutting, shot-blasting, bending, rolling, welding, annealing, machining, grinding, boring, application of primer, painting, QC inspections.

The goal is to control the full cycle of manufacturing.

The company portfolio includes:

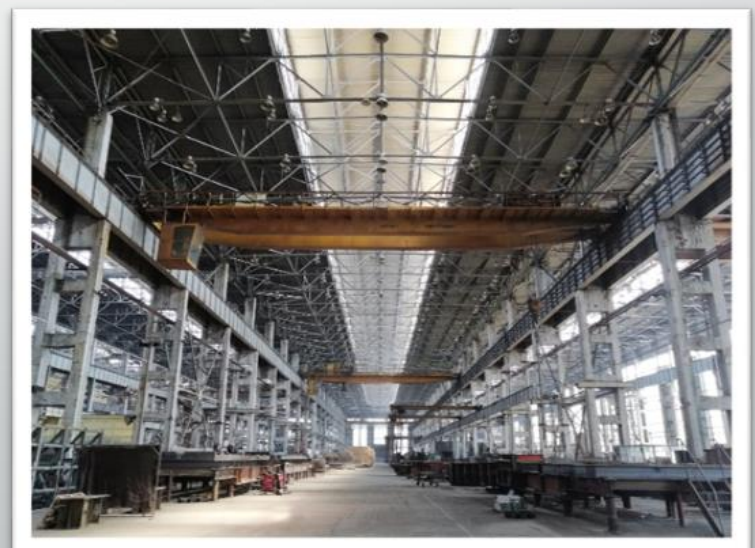
SHIP STABILIZER BOXES AND FINS, GENSET BASEFRAMES, TURBINE CASES, LARGE-SCALE PARTS FOR MACHINE-BUILDING AND REPAIR OF RAILWAY WAGONS.

LOCATION



The plant is located on the Danube riverside in Ruse, Bulgaria, 70 km from Bucharest's Otopeni Airport.

- Sheltered factory area: 65,000 sq. m.
- 30+ cranes with a lifting capacity of up to 160 tons.
- Direct access to railway, river port, and roads.



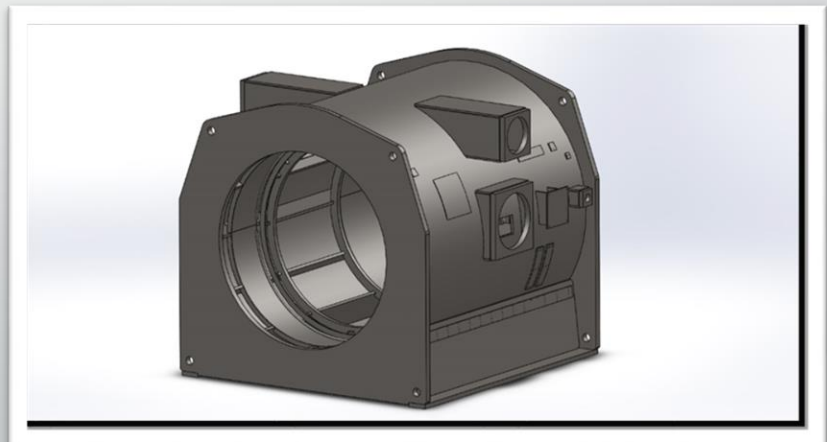
ENGINEERING DEPARTMENT AND QUALITY CONTROL TEAM



TM-Technology has an Engineering team in-house who develop the Projects.



The Quality Control team consists of skilled and qualified professionals.



EQUIPMENT



MicroStep CNC Oxy-Plasma Cutting Machine



- 12000x4000mm.
- Max. cutting thickness - 300mm.
- 3D rotary head up to $\pm 50^\circ$.
- Accuracy of positioning : ± 0.1 mm.

Machine for Fiber-laser cutting NF PRO 620 - 6KW CUT LINE



- 6050x2030mm.
- Max. cutting thickness - 25mm.
- Head: NUKON NLCH, automated focus.
- Accuracy of positioning : $\pm 0,05$ mm.

EQUIPMENT

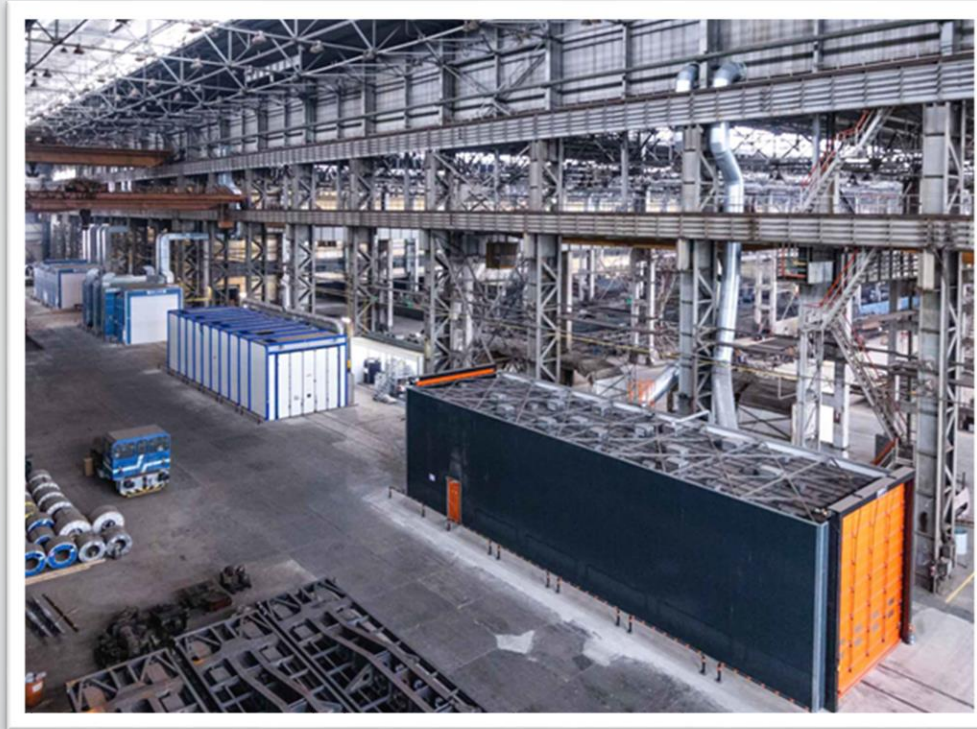


CNC hydraulic bending press



- Compression force: 8000KN or 800 tons
- Compression force per linear meter: 2500KN
- Length of folding: 8000mm.
- Distance between columns: 6400mm
- Anti-deformation system **WILA** compensate bending crowning
- CNC control with free programmable limits on all axes

COATING LINE



1. CHAMBER FOR MANUAL BLASTING

$L=24000xW=5500xH=5000mm$

2. COMBINED CHAMBER FOR
DEGREASING AND PHOSPHATING

$L=24000xW=4500xH=5200mm$

3. DRYING CHAMBER

$L=24000xW=5000xH=5200mm$

4. COMBINED CHAMBER FOR
MANUAL PAINTING AND DRYING

$L=24000xW=5000xH=5200mm$



COATING LINE

The Painting chamber is additionally supported by three separate areas:

- automatic paint mixing and automatic machine filling
- laboratory
- controlled temperature storage room for coatings.

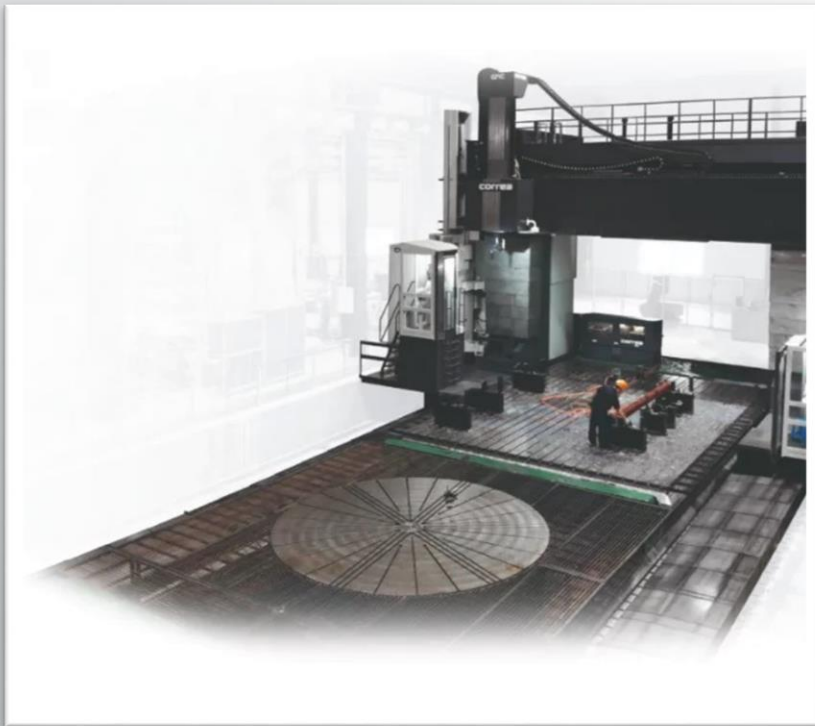


MACHINING EQUIPMENT

LARGE-SCALE UNITS



Gantry Type Machine VERXA MW175 Heidenhain TNC 640



➤ Dimension travel:

X = 17 500mm Y = 7 600mm
Z = 2 500mm W = 2 500mm

Total load capacity: 80T

➤ Precision of positioning:

X = 14 μ m

Y = 8 μ m

Z/W = 4.1 μ m

➤ Rotating table:

D = 3 000mm

Load capacity = 40T

MACHINES WITH CNC CONTROLS



Machining Centre SORALUCE FP-8000,
Heidenhein iTNC 530

Maximum dimensions of machined part - 7200x3100x1500mm



Travel dimensions

X = 8000 mm

Y = 2600 mm

Z = 1500 mm

Rotating table, Q=20t

dimensions – 2000mm x 2500mm



MACHINING EQUIPMENT LARGE-SCALE UNITS



Horizontal Boring machine

Travel dimensions

X = 17000 mm

Y = 5000 mm

Z = 2000 mm

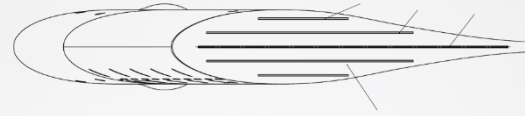
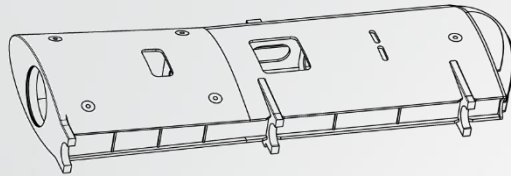
Field Table, Q=60 T

Rotating table, Q=24 T

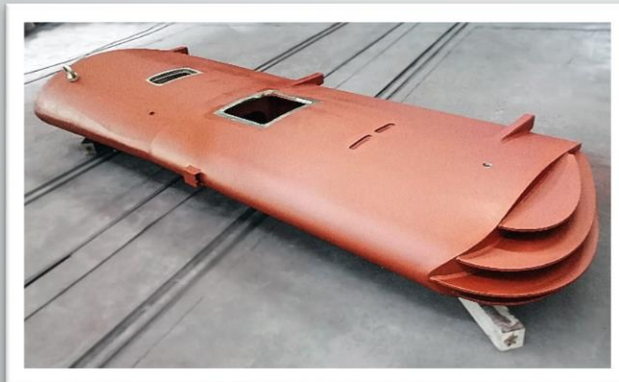
dimensions – 2500mm x 2500mm



MANUFACTURING



Stabilizer Fin Boxes up to 51T per unit and Fins



MANUFACTURING

Generator Cases up to 20T



MANUFACTURING



Baseframes with dimensions up to 18000x3500x1500mm



...and with weight up to 60 Tons per unit

MANUFACTURING



Welded Constructions according to Customer documentation and specifications





TM TECHNOLOGY

FOR MORE INFORMATION PLEASE CONTACT

Aleksandrina Yordanova

Sales Specialist

a.yordanova@tm-technology.bg

+359 886 333 077

Victor Petrov

Commercial Director

vik.petrov@tm-technology.bg

+359 898 323 200

THANK YOU FOR YOUR ATTENTION!

www.tm-technology.bg